

FOR LEASE

UPPER WESTSIDE FREE-STANDING RESTAURANT / RETAIL SPACE

1940 MOORES MILL RD

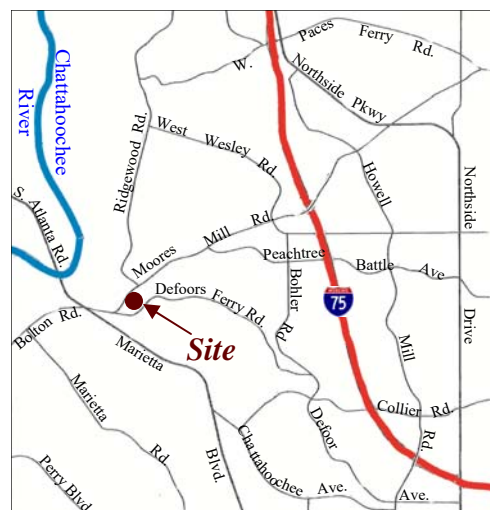
ATLANTA GA 30318



- New Moore's Mill Development**
- 70,000 SF Retail
 - 345 Unit Apartment Complex
 - 45,000 SF Publix Supermarket

Size: 5,005 RSF (Can be subdivided)
Use: Restaurant / Medical / Retail

	1 MILE	2 MILES	3 MILES
2015 Total Population	5,864	22,645	53,452
2015 Average Household Income	\$88,351	\$98,014	\$105,720
2015 Average Households	2,676	10,395	25,633
Traffic Counts	Moore's Mill/Ridgewood/Bolton: 11,650 VPD		



Ellis Murray
 404.869.2624
 ellis@joelandgranot.com

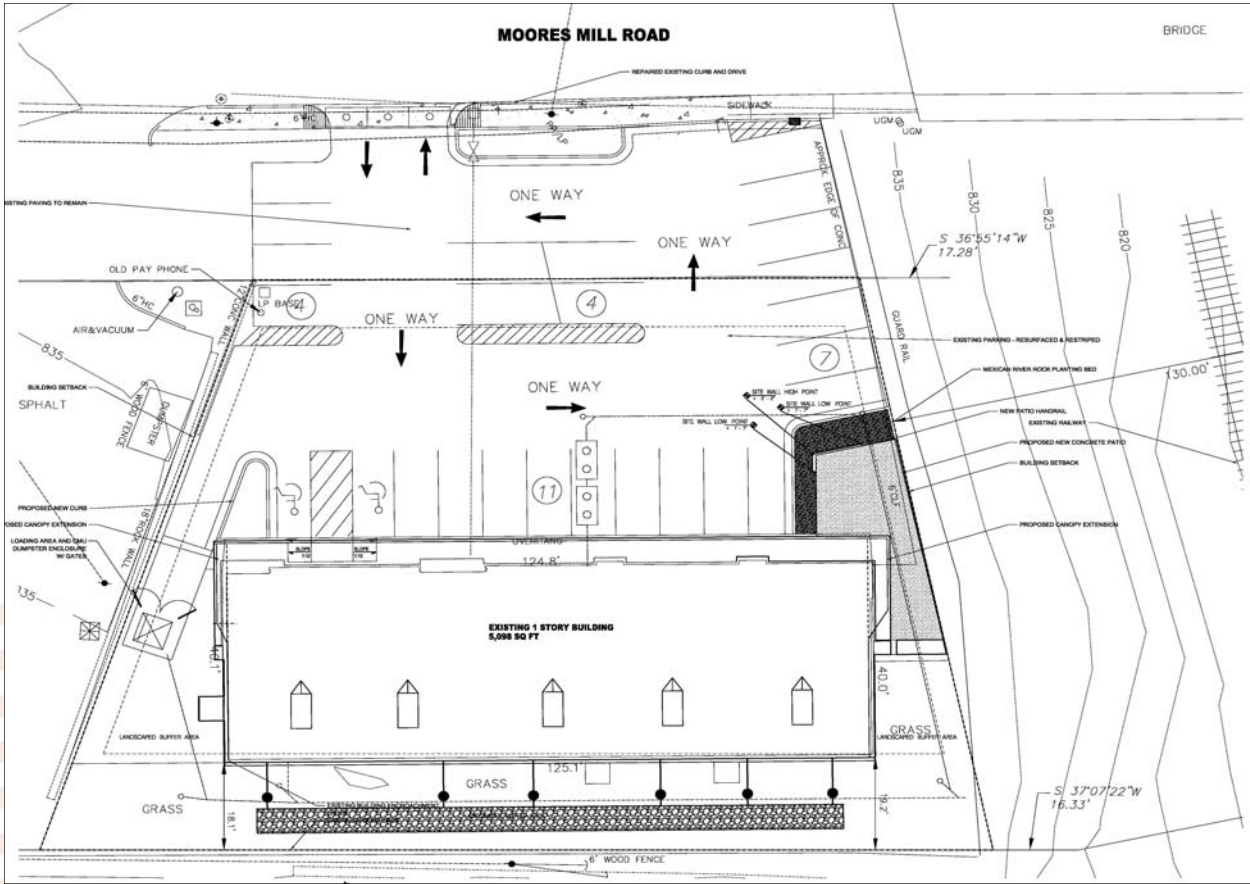
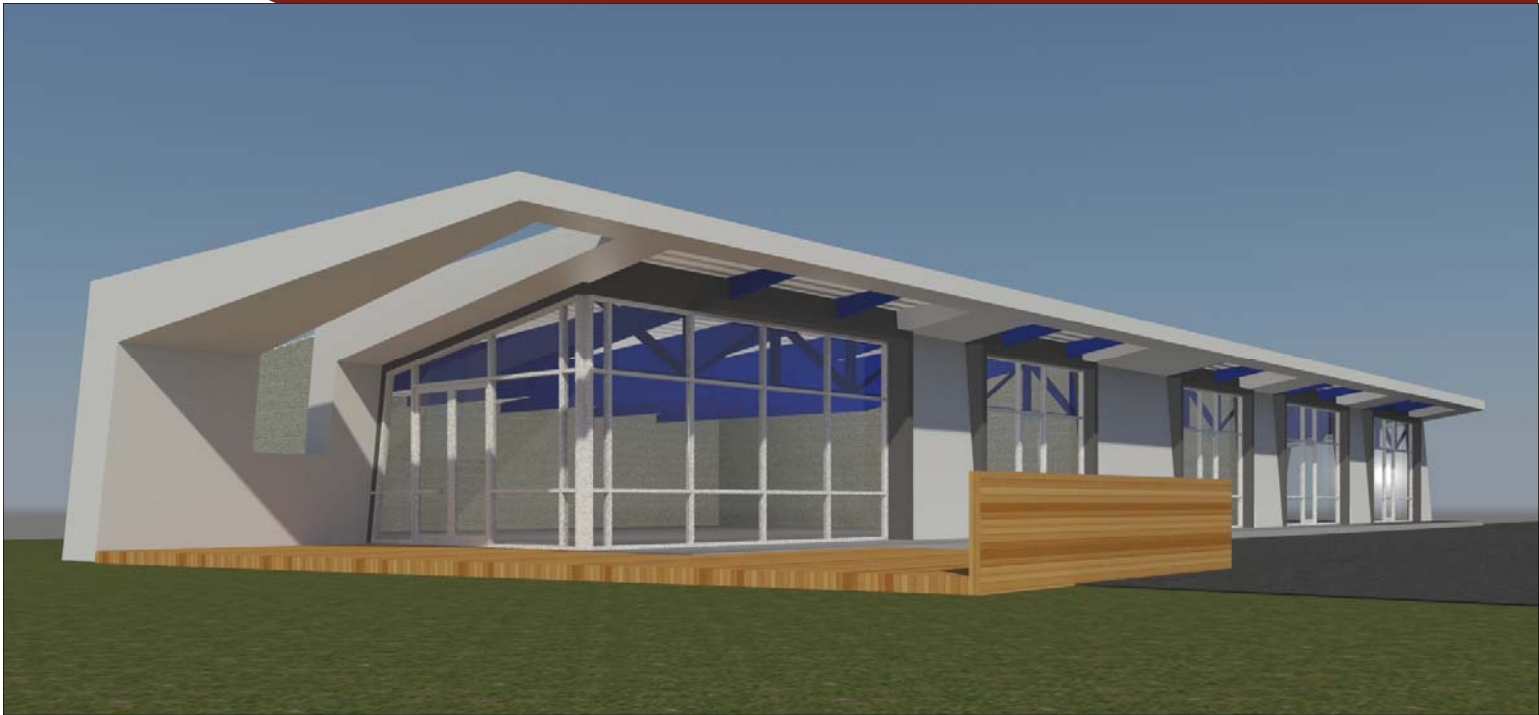
Alan Joel
 404.869.2602
 alan@joelandgranot.com



962 Howell Mill Road, Atlanta, GA 30318
 (ph) 404.869.2600 | (fax) 404.869.2601
 www.joelandgranot.com

The information was obtained from sources we assume are reliable. We do not doubt its accuracy, however we do not guarantee it. No liability is assumed for errors and omissions. Information is subject to changes and withdrawal without notice.

1940 MOORES MILL RD ATLANTA GA 30318



962 Howell Mill Road, Atlanta, GA 30318
(ph) 404.869.2600 | (fax) 404.869.2601

The information was obtained from sources we assume are reliable. We do not doubt its accuracy, however we do not guarantee it. No liability is assumed for errors and omissions. Information is subject to changes and withdrawal without notice.



JOEL & GRANOT
COMMERCIAL REAL ESTATE