

RESTAURANT SPACE AVAILABLE FOR LEASE

Downtown Street & Lower Level Space

Corner of Edgewood Avenue / Park Place / Decatur Street



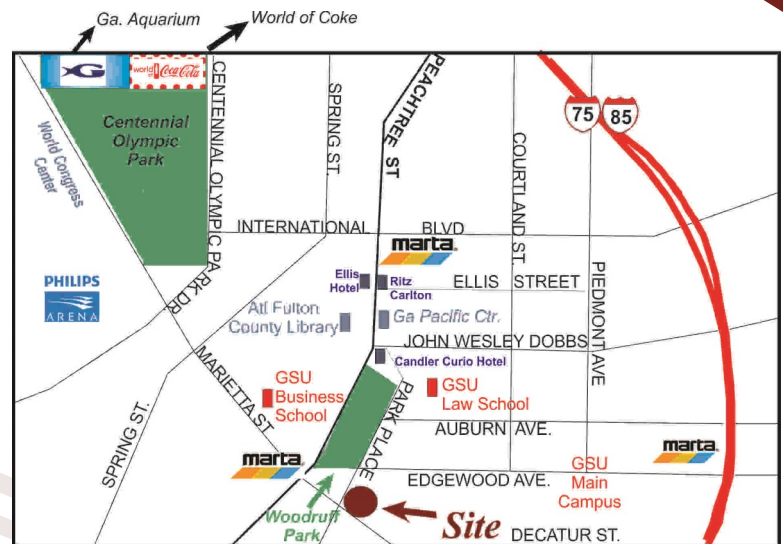
10 Park Place, Atlanta, GA 30303

RATE: \$4,166.67 PER MONTH NNN (Street Level)
\$12.00/SF Net of Janitorial (Lower Level)

OPEX: \$3.50/SF

SIZE: 1,250 RSF (Street Level)
1,600-16,000 (Lower Level)

- Vent Hood and Grease Trap in Place
- Street Level Retail Access and Exposure
- Adjacent to GA State University with a 32,681/Week Pedestrian Count
- MARTA Rail & Street Car Access
- Located in the heart of the Opportunity Zone. For more information go to <https://www.investatlanta.com/business/bonds-incentives/opportunity-zones/>
- Building on the National Register of Historic Places
- Below Market Rent Lower Level Space up to 16,000 RSF



Dave Smith

404.869.2605

dave@joelandgranot.com

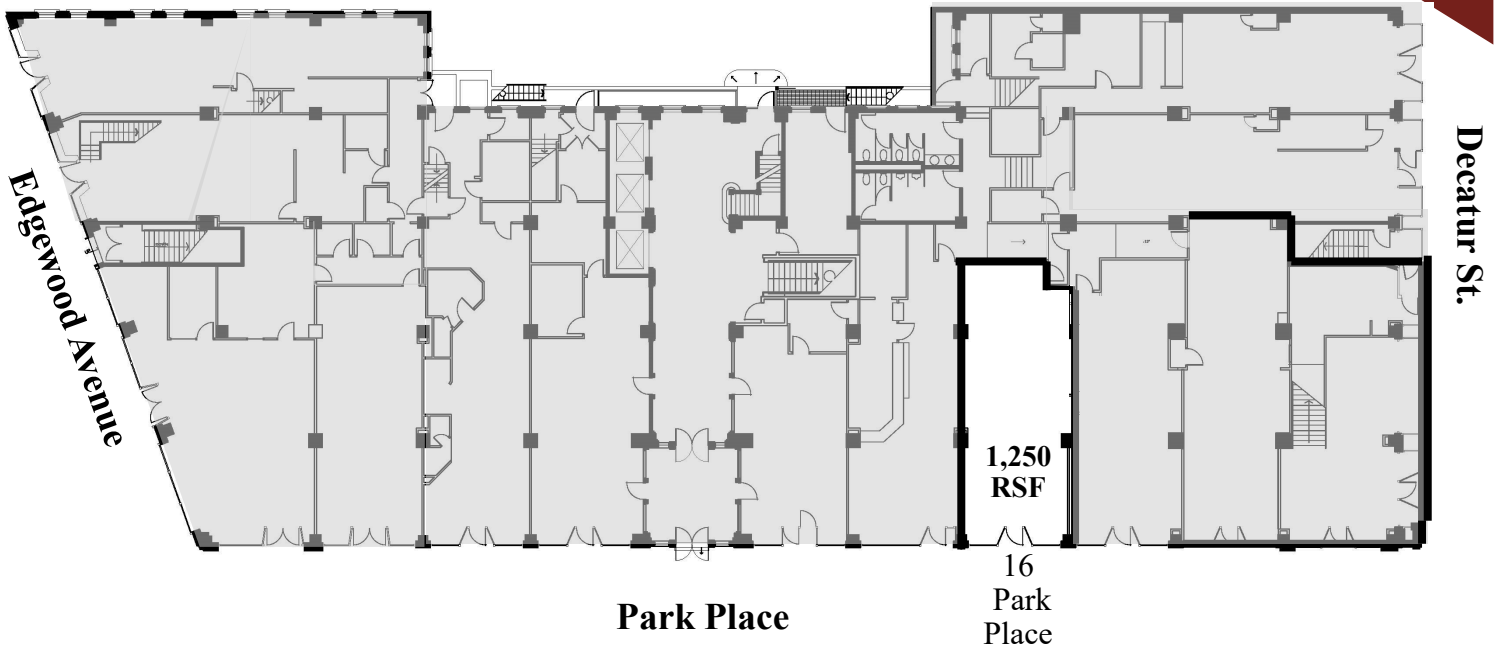
For complete details, please visit: www.joelandgranot.com



962 Howell Mill Road, Atlanta, GA 30318
(ph) 404.869.2600 | (fax) 404.869.2601

The information was obtained from sources we assume are reliable. We do not doubt its accuracy, however we do not guarantee it. No liability is assumed for errors and omissions. Information is subject to changes and withdrawal without notice.

16 Park Place, Atlanta, GA 30303 Floor Plan



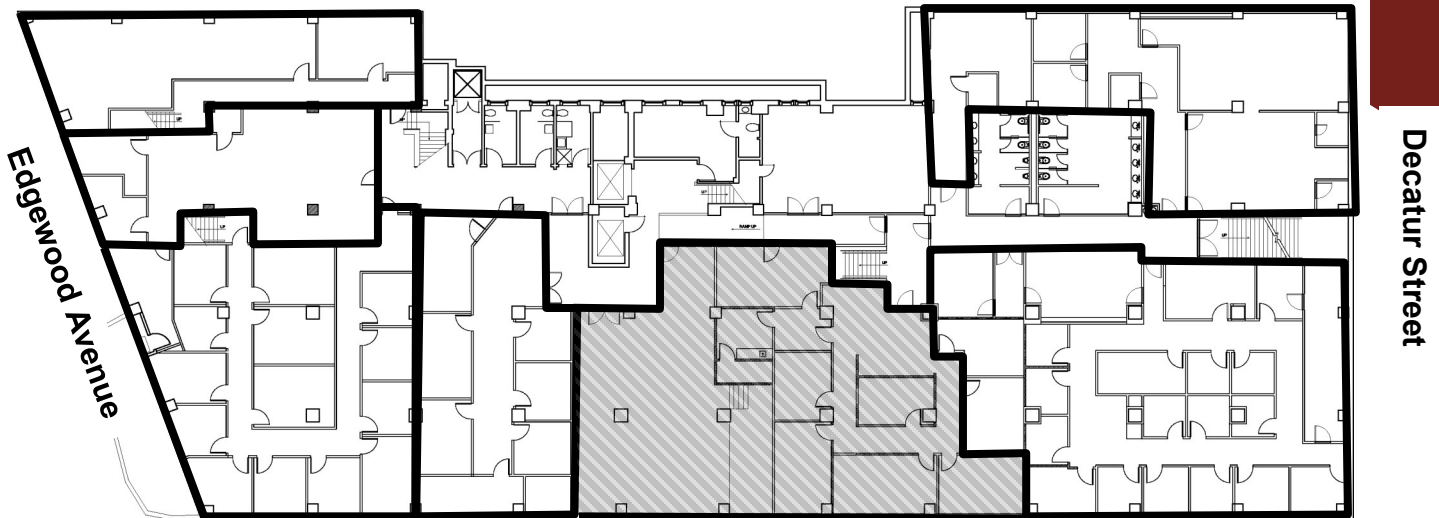
JOEL & GRANOT
COMMERCIAL REAL ESTATE

962 Howell Mill Road, Atlanta, GA 30318
(ph) 404.869.2600 | (fax) 404.869.2601

The information was obtained from sources we assume are reliable. We do not doubt its accuracy, however we do not guarantee it. No liability is assumed for errors and omissions. Information is subject to changes and withdrawal without notice.

10 Park Place, Atlanta, GA 30303 Floor Plan

1,600 - 16,000 RSF



Park Place

- 24 Hour, 7 Days/Week Access
- Elevator and Handicap Accessible
- Former GA State Classrooms & Offices
- Multiple Existing Restrooms
- Direct Access to Edgewood & Decatur Streets



JOEL & GRANOT
COMMERCIAL REAL ESTATE

962 Howell Mill Road, Atlanta, GA 30318
(ph) 404.869.2600 | (fax) 404.869.2601

The information was obtained from sources we assume are reliable. We do not doubt its accuracy, however we do not guarantee it. No liability is assumed for errors and omissions. Information is subject to changes and withdrawal without notice.