

SUBLEASE AVAILABLE IN THE MIDTOWN MARKET PEACHTREE 25TH



**1718-1720 Peachtree Road, Suite 532
Atlanta, GA 30309**

LEASE RATE: \$21.00/SF FULL SERVICE

SIZE: 2,635 RSF

- Term Through March 31, 2021
- Plug & Play Space with 4 Offices, Conference Room, Break-room and Open Area
- Excellent Ingress/Egress of Peachtree and 25th Street, with Traffic Signal
- Exceptional Access to I-85, I-75 and GA 400
- Amenities Include: Café with Outside Seating, Modern Fitness Center, 2 Conference Facilities, ATM, On-Site Management
- Affordable Monthly and Visitor Parking
- Furniture Negotiable

Ellis Murray

404.869.2624

ellis@joelandgranot.com

For complete details, please visit: www.joelandgranot.com

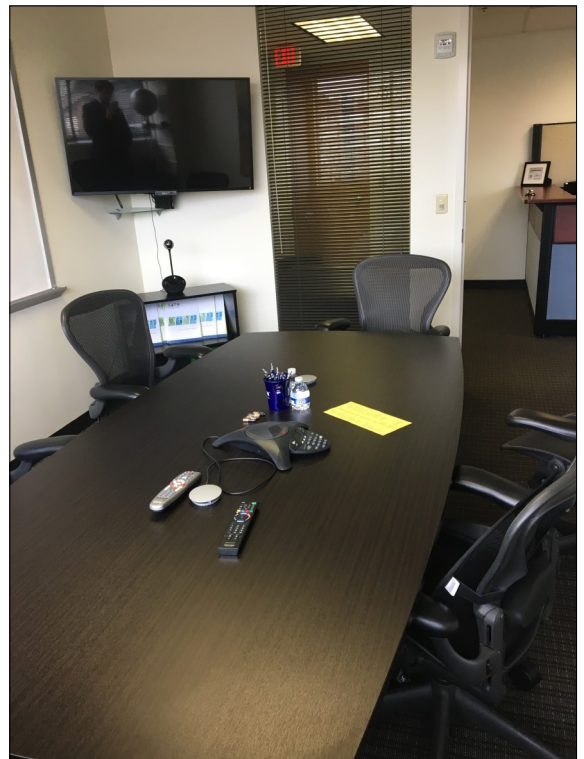
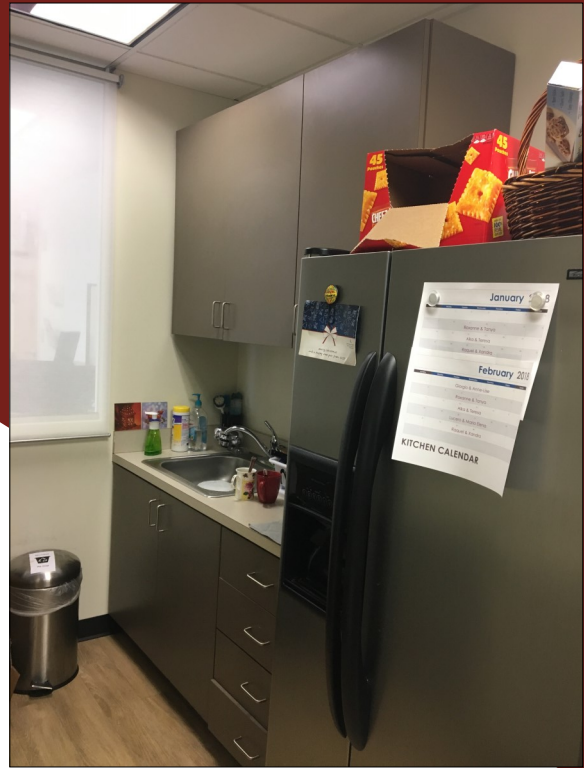
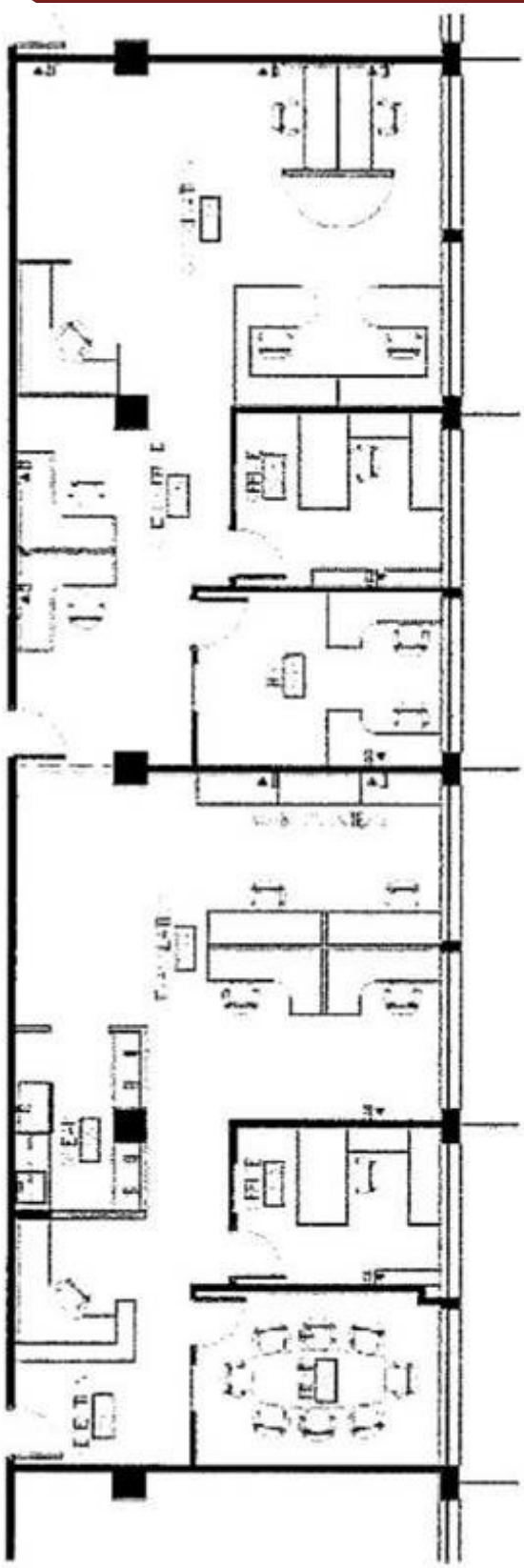


JOEL & GRANOT
COMMERCIAL REAL ESTATE

962 Howell Mill Road, Atlanta, GA 30318
(ph) 404.869.2600 | (fax) 404.869.2601

The information was obtained from sources we assume are reliable. We do not doubt its accuracy, however we do not guarantee it. No liability is assumed for errors and omissions. Information is subject to changes and withdrawal without notice.

PEACHTREE 25TH Suite 532



962 Howell Mill Road, Atlanta, GA 30318
(ph) 404.869.2600 | (fax) 404.869.2601

The information was obtained from sources we assume are reliable. We do not doubt its accuracy, however we do not guarantee it. No liability is assumed for errors and omissions. Information is subject to changes and withdrawal without notice.